

BPC-SX2

Specification

Board type	510x460 mm (standard)	
Board thickness	0.3~4.0 mm	
Fixed rail side	Back or front	
Flow direction	Left to right or Right to left	
Rail height	900 ± 25 mm / 900 ± 25 mm	
Inspection item	Insufficient, Excess, Misalignment, Bridge Volume, Cross-sectional area, Projection area, Average height, Peak height, Balance	
Minimum adjacent distance	0.08 mm	
Minimum components	0.15 mm pitch: CSP, 0402 chip (mm unit)	
Inspection time	Standard mode	4 500 mm ² /sec
	High-speed	9 000 mm ² /sec
	High-resolution	2 200 mm ² /sec
Camera resolution	Standard or High-speed	24µm/pixel
	High-resolution	12µm/pixel
	Resolution switchable software	
Illumination	Slit illumination	
Inspection data programming	Automatic conversion from Gerber Data	
Utilities	AC100V±10% 1.5KVA /50/60Hz /AC230V±10%	
Dry Air	0.4~0.5 Mpa 10NI/min	
Machine size	1,100(W) x 1,200(D) x 1,400(H)mm, (Exclude display)	
Weight	Approx 550Kg	



DJK Europe GmbH



DJK Europe GmbH



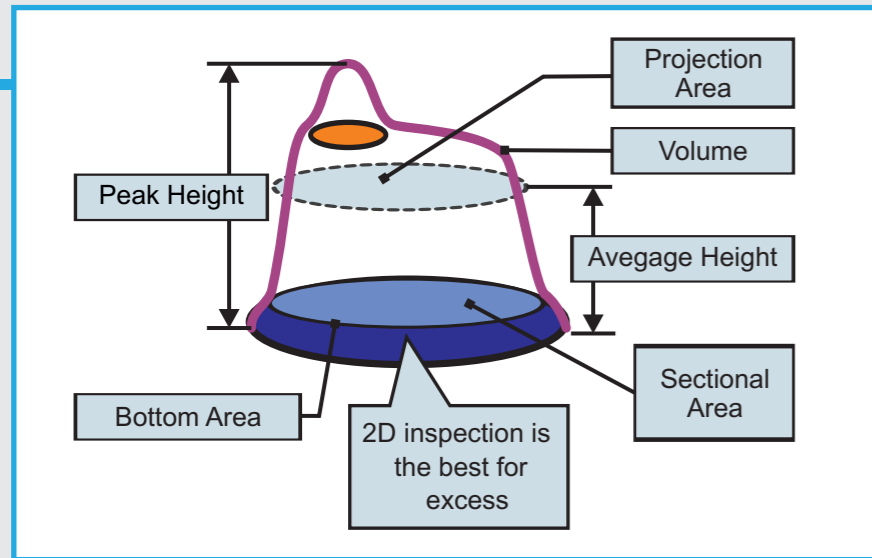
BPC-SX2

DJTECH

DJK Europe GmbH
Mergenthalerallee 79-81,
65760 Eschborn, Germany,
Tel : +49-6196-776-14-20,
Fax : +49-6196-776-14-19,
sales-smt@djkeurope.com
www.djkeurope.com

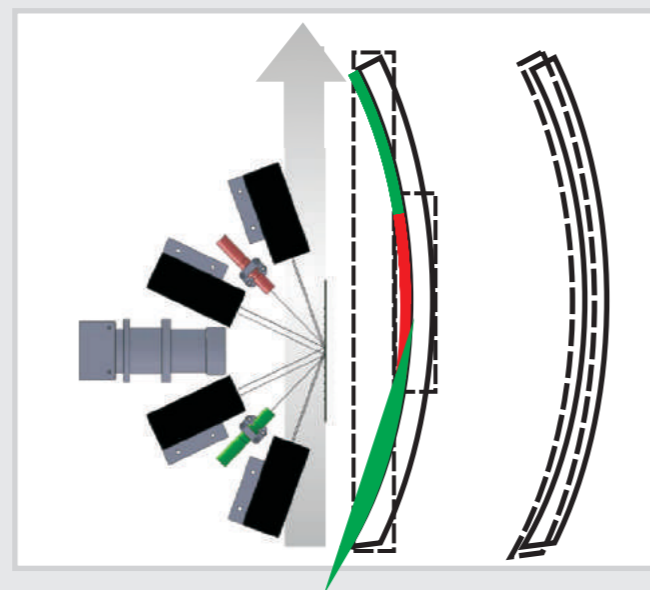
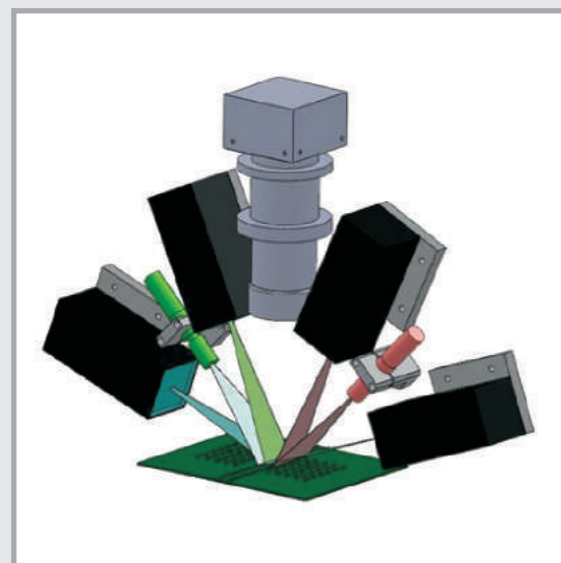
Contributing to your global success

Get exact information by taking advantage of 2D/3D inspection



- 3D Section (sectional area of surging paste)
- 3D Projection (paste peak size)
- 3D Volume paste volume
- 3D Average Height paste volume(sectional area)
- 3D Peak height
- 2D Shifting paste area on pad
- 2D Bottom judgement of excess

Features

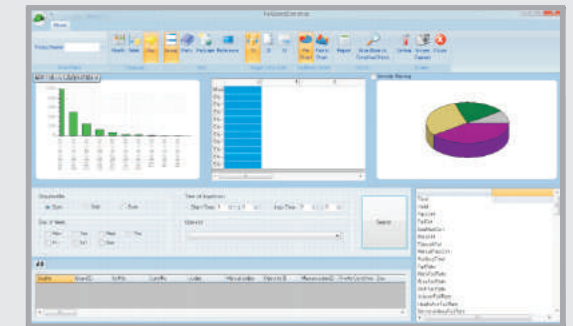
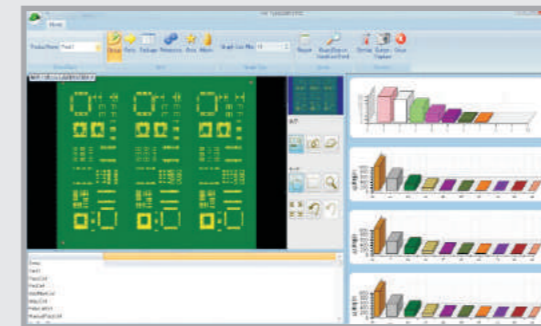


- High accuracy
- No shadow effect
- Automatic resolution switch
- Automatic program creation
- Double speed inspection by quick scanning
- 2D/3D normal mode : 4 500 mm²/sec
- 2D/3D high-speed mode: 9 000 mm²/sec
- Optical 2D/3D simultaneous inspection
- Z axis real-time warp control
- Special lighting for green/blue PC boards
- Multiple slit lighting

BPC-SX2

2D·3D Solder Print Inspection System

Statistical Process Control Software

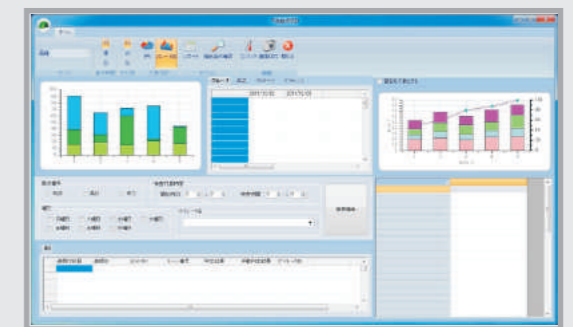
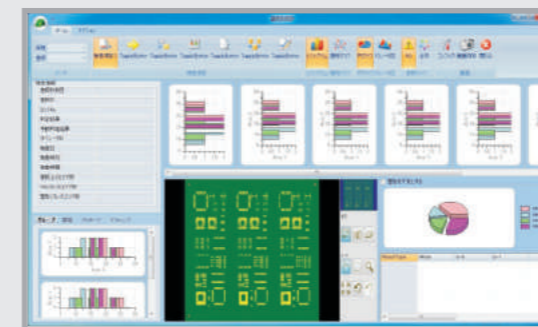


Function Outline

- A variety of functions for prototype to production process control

Inspection Status Trace

- Off-line check for printing condition
- Powerful and effective traceability
- Production Status Control
- Simple but rich contents
- Optimum printing quality control



Statistical Analysis

- Printing Stability and Process Performance Evaluation
- Abstract problematic printing location
- Analysis by product lot
- Flexible Grouping

Graphic Indicator

- Printing History Check
- Abstract problematic PCBs
- Histogram History

Remote Monitoring

- Printing condition real time monitoring
- Remote Judgment



DJK Europe GmbH