

Quality is more than a word

ESPEC

# Network Solutions

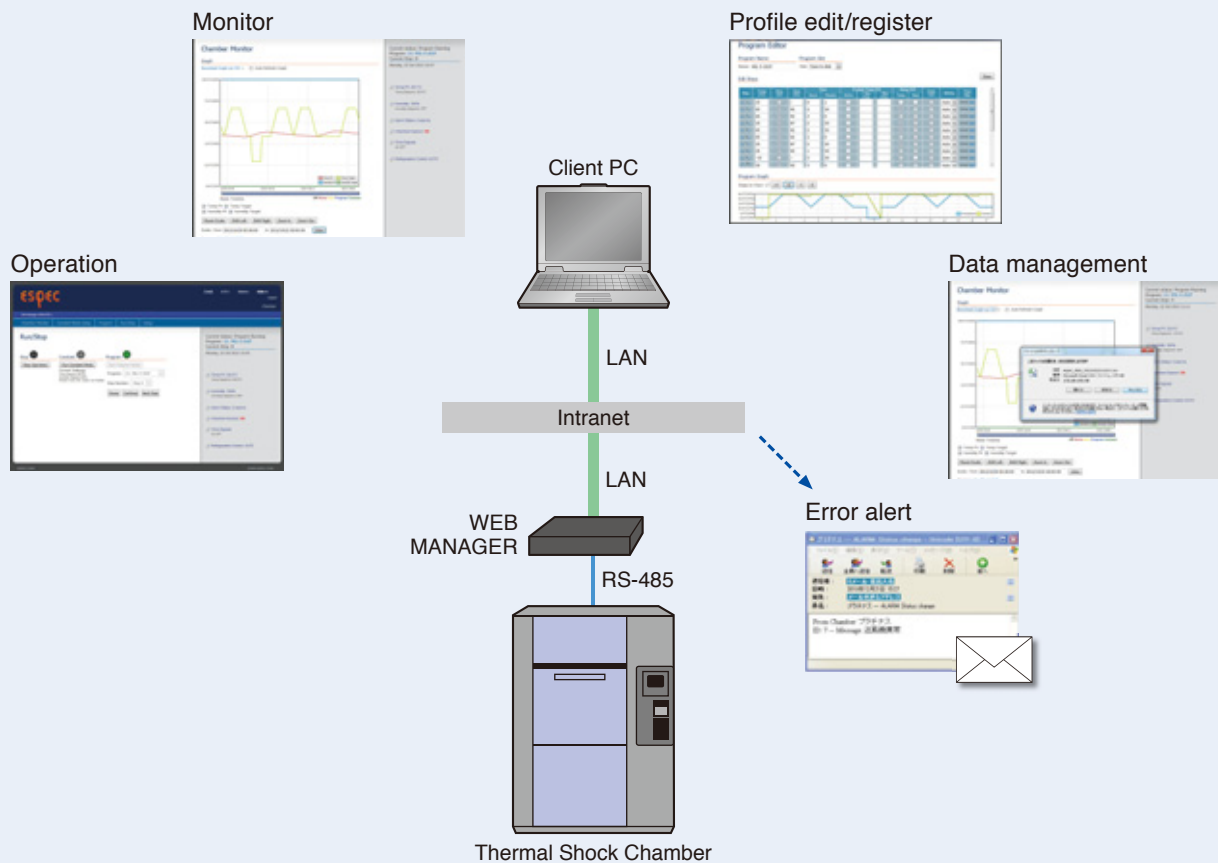
# Versatile network application supporting a wide range of test processes

ESPEC's network solutions provide features that enable users to edit and register test conditions for the test chamber more easily, and monitor its operation on the PC.

The network application has four major functions.

- Monitor Function: Monitors chamber status.
- Profile Editing Function: Edits, sets, and registers test conditions.
- Operation Function: Starts/stops the operation of the test chamber.
- Data Management Function: Records test data.

These functions become available to use on the PC by simply connecting the PC to the test chamber. ESPEC introduces a fully-fledged new network application exclusively for environmental chamber, allaying excellent convenience and ease of use.



## ● Easy connection

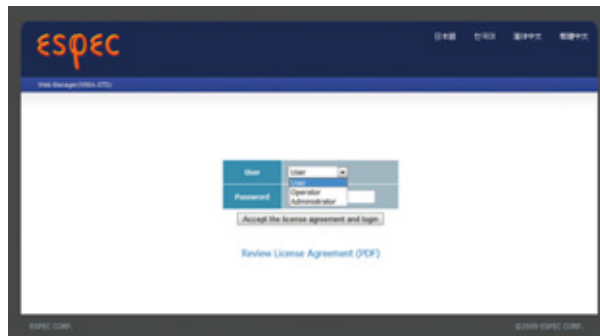
The hardware setup is incredibly simple. The only requirement is to connect the test chamber to the WEB MANAGER (converter) through an RS-485 communication port, then the WEB MANAGER to the PC through a LAN network. The test chamber can be accessed from the Web browser on the PC without installing any dedicated software.



WEB MANAGER

## ● Easy account configuration during initial setup

The account configuration during the initial setup is also very simple. By following the network configuration step-by-step, including the assignment of the IP address, the user can establish access to the WEB MANAGER via the Web browser on the PC.



Login screen

## ● Operation level selection according to the user

The access permissions from the PC are divided into three levels depending on who will access the web application.

User: Monitor function

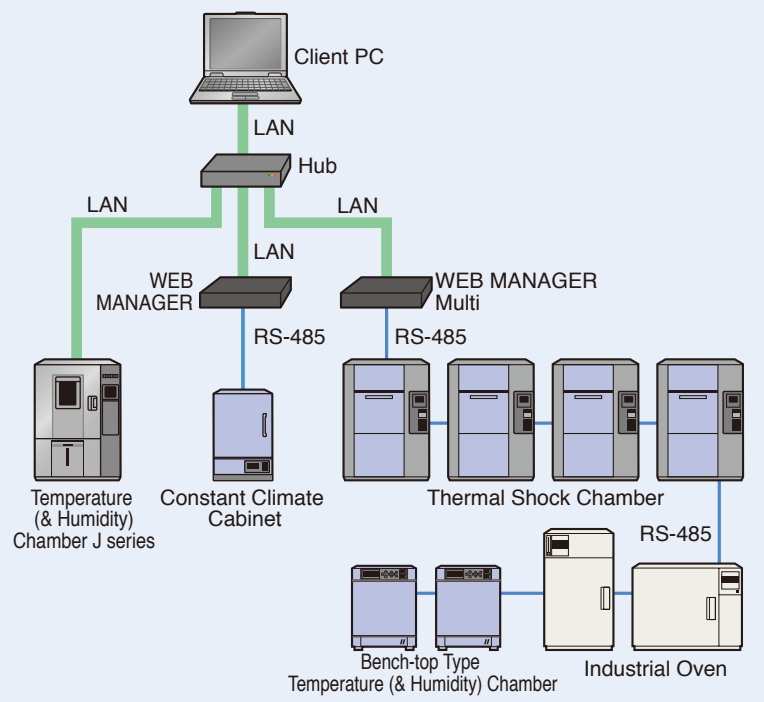
Operator: Monitor function and operation function

Administrator: All functions

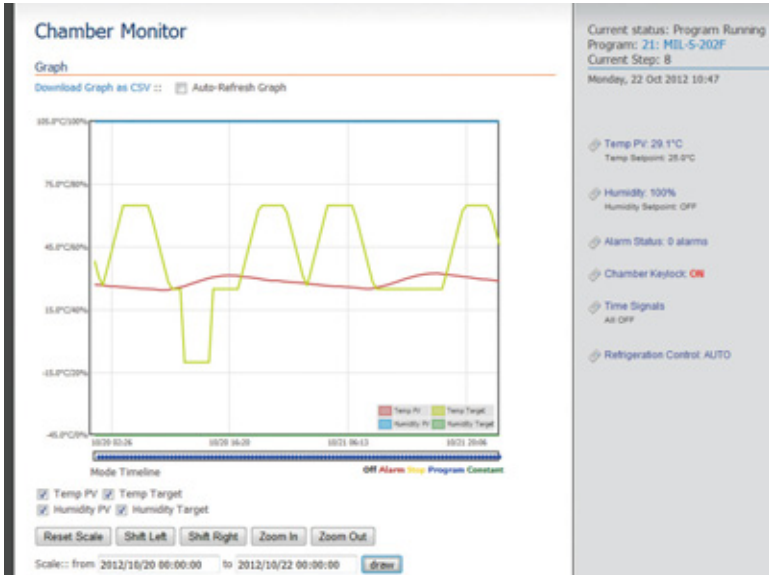
## ● E-mail alert

If the WEB MANAGER is connected to the mail server, an alert is sent via e-mail to the PC - when an error occurs on the test chamber.

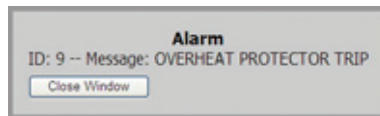
## ● Example of Connection



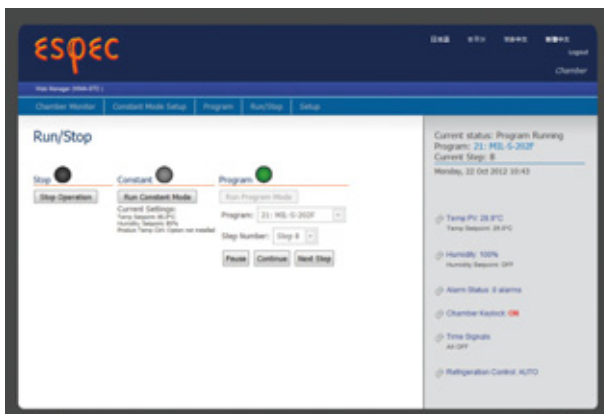
\*The N-instrumentation is equipped with the WEB MANAGER as a standard.  
Models supported: Temperature (& Humidity) Chamber J series  
Walk-In Type Temperature (& Humidity) Chamber E Series



Chamber Monitor screen



Alarm Notification pop-up window



Run/Stop Operation screen

Time	Temperature	Humidity	Humidity T	Alarm	Mode
2012/5/25 00:00	37.8	0	67	0	0:CONSTANT
2012/5/25 00:01	37.8	0	67	0	0:CONSTANT
2012/5/25 00:02	37.8	0	67	0	0:CONSTANT
2012/5/25 00:03	37.8	0	67	0	0:CONSTANT
2012/5/25 00:04	37.8	0	67	0	0:CONSTANT
2012/5/25 00:05	37.8	0	67	0	0:CONSTANT
2012/5/25 00:06	37.8	0	67	0	0:CONSTANT
2012/5/25 00:07	37.8	0	67	0	0:CONSTANT
2012/5/25 00:08	37.7	0	67	0	0:CONSTANT
2012/5/25 00:09	37.7	0	67	0	0:CONSTANT
2012/5/25 00:10	37.7	0	67	0	0:CONSTANT
2012/5/25 00:11	37.7	0	67	0	0:CONSTANT
2012/5/25 00:12	37.7	0	67	0	0:CONSTANT
2012/5/25 00:13	37.7	0	67	0	0:CONSTANT
2012/5/25 00:14	37.7	0	67	0	0:CONSTANT

Data Recording (Excel)

## ● Test chamber monitor function

This function allows real-time monitoring of operation status. It can plot settings and measured values in a chart so that the user can follow the course of testing. In addition, a flexibly changeable chart scale allows prolonged test and a check of detailed settings. When the alarm goes off, the alarm notification includes the description of error occurrence.

The operation status of the test chamber can be checked from any PC connected to the intranet.

## ● Operation function

This function, which allows the operator to start/stop the operation of the test chamber and change its profile from the PC on the network, improves testing efficiency.

## ● Data recording/management function

The test data collected by the WEB MANAGER can be downloaded to the PC in a CSV format. This enables the user to manage data on the PC, facilitating data processing.

## ● Profile edit/register function

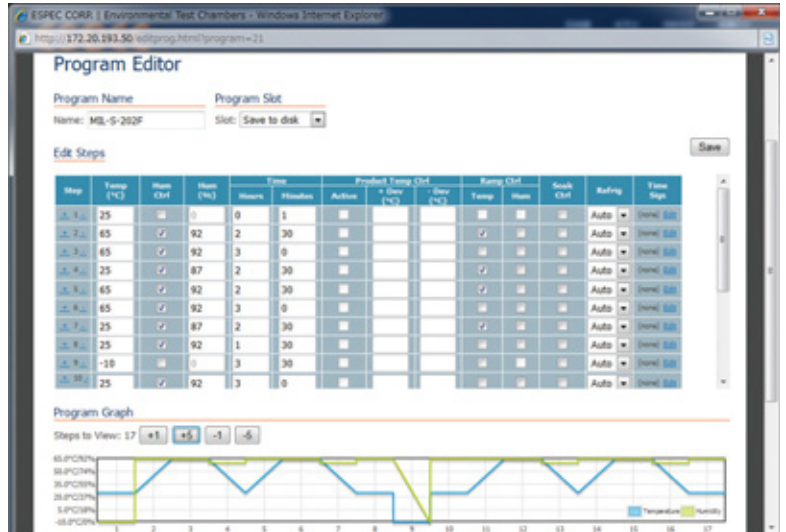
This function allows viewing and editing of profile data registered in the test chamber.

The profile editing operation on the PC is easy. Another advantage in using the PC is that complicated profiles can be displayed as a chart, which is better for visual confirmation of profiles.

Since the created profiles can not only be registered in the test chamber but also stored in the PC, it is possible to register multiple profiles.

### Editable items

- The current temperature setting values
- Steps
- Times



Program Editor screen

## ● Multi-lingual display

A simple operation changes display text to Japanese, Chinese (simplified, traditional), or Korean. Select the language that suits your needs. (WMA-STD)



Program Register screen

### Models supported \*Limited to chambers with RS-485 communication ports

#### <WMA-STD>

- Temperature (& Humidity) Chamber Platinous K Series
- Environmental Stress Chamber
- Bench-top Type Temperature (& Humidity) Chamber
- Constant Climate Cabinet
- Compact Ultra Low Temperature Chamber (P-Instrumentation only)
- Walk-In Type Temperature (& Humidity) Chamber H Series
- Large Volume Temperature Chamber (M-Instrumentation only)
- Temperature Chamber (Industrial Ovens) (M-Instrumentation only)
- Clean Oven (M-Instrumentation only)

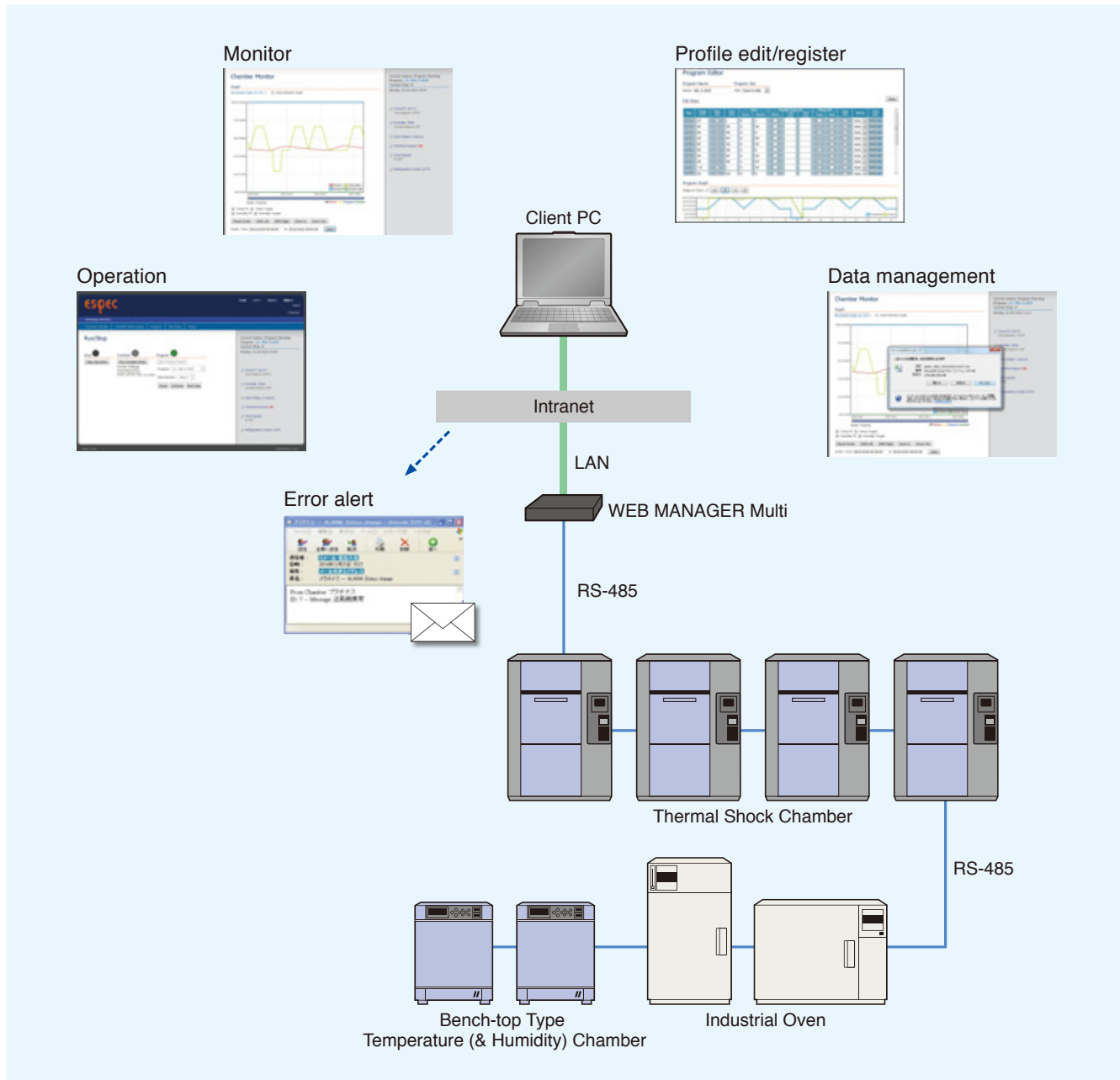
#### <WMA-TS>

- Thermal Shock Chamber TSA Series
- Thermal Shock Chamber TSD
- Thermal Shock Chamber TSE
- Liquid to Liquid Thermal Shock Chamber TSB

(November, 2012.)

## Provides centralized control over max. 8 test chambers

The WEB MANAGER Multi, which can be simultaneously connected with up to 8 test chambers, offers exactly the same functions as the WEB MANAGER.



- **Any test chamber supported by the WEB MANAGER Multi can be connected**

A single WEB MANAGER Multi can communicate with up to 8 models as long as they are equipped with an RS-485 communication port.

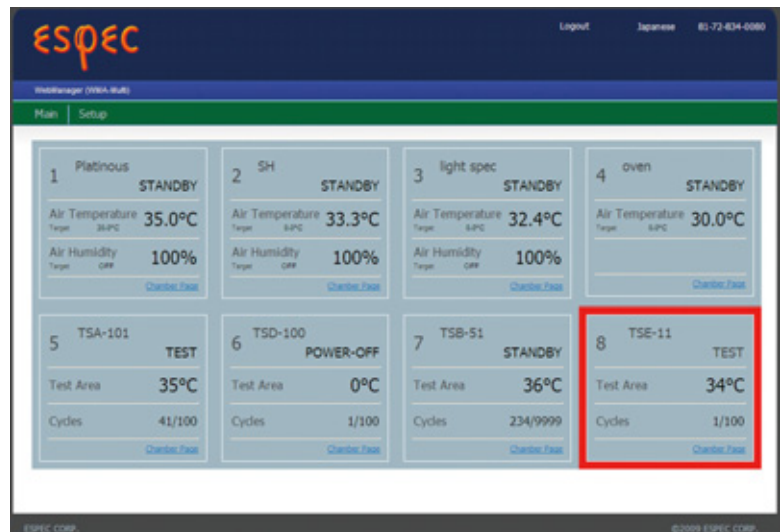
- **8 test chambers monitoring on a single screen**

To facilitate monitoring and managing test chambers, the WEB MANAGER Multi allows the user to monitor 8 test chambers on a single screen.

- **Easy connection work completes the setup**

The network application becomes available to use by simply connecting the test chambers to the WEB MANAGER Multi via RS-485 port and the WEB MANAGER Multi to the PC via LAN network.

No dedicated software is required to be installed since the test chambers are accessed via the Web browser.



Main screen

### Models supported \*Limited to chambers with RS-485 communication ports

- Temperature (& Humidity) Chamber Platinous K Series
- Environmental Stress Chamber
- Bench-top Type Temperature (& Humidity) Chamber
- Constant Climate Cabinet
- Compact Ultra Low Temperature Chamber (P-Instrumentation only)
- Walk-In Type Temperature (& Humidity) Chamber H Series
- Thermal Shock Chamber TSA Series
- Thermal Shock Chamber TSD
- Thermal Shock Chamber TSE
- Liquid to Liquid Thermal Shock Chamber TSB
- Large Volume Temperature Chamber (M-Instrumentation only)
- Temperature Chamber (Industrial Ovens) (M-Instrumentation only)
- Clean Oven (M-Instrumentation only)

(November, 2012.)

**ESPEC CORP.** <http://www.espec.co.jp/english>

**Head Office**

3-5-6, Tenjinbashi, Kita-ku, Osaka 530-8550, Japan  
Tel: 81-6-6358-4741 Fax: 81-6-6358-5500

**ESPEC NORTH AMERICA, INC.**

Tel: 1-616-896-6100 Fax: 1-616-896-6150

**ESPEC EUROPE GmbH**

Tel: 49-89-1893-9630 Fax: 49-89-1893-96379

**ESPEC (CHINA) LIMITED**

Tel: 852-2620-0830 Fax: 852-2620-0788

**ESPEC ENVIRONMENTAL EQUIPMENT (SHANGHAI) CO., LTD.**

**Head Office**

Tel: 86-21-51036677 Fax: 86-21-63372237

**BEIJING Branch**

Tel: 86-10-64627025 Fax: 86-10-64627036

**TIANJIN Branch**

Tel: 86-22-26210366 Fax: 86-22-26282186

**GUANGZHOU Branch**

Tel: 86-20-83317826 Fax: 86-20-83317825

**SHENZHEN Branch**

Tel: 86-755-83674422 Fax: 86-755-83674228

**SUZHOU Branch**

Tel: 86-512-68028890 Fax: 86-512-68028860

**ESPEC TEST TECHNOLOGY (SHANGHAI) CO., LTD.**

Tel: 86-21-68798008 Fax: 86-21-68798088

**ESPEC SOUTH EAST ASIA SDN.BHD.**

Tel: 60-3-8945-1377 Fax: 60-3-8945-1287